





# Your **Dream** Our **Responsibility**





We believe in  
**Compliance** & **Sustainable  
Solutions**





## 1 Why Dimension

Identity

## 2 Story Behind

Identity

## 3 Our Services

Identity

## 4 Structural Design & Consultancy

Services

## 5 Construction & Retrofitting

Services

## 6 Detailed Engineering Assessment (DEA)

Services

## 7 Project Management Consultancy (PMC)

Services

## 8 Star Clients

Get to know about our clients

## 10 Our Creations

Dreams we made into reality



**Dimension Nano Engineering**, founded by **Engr. M M Haque Rajib** in 2013, has grown into a **premier engineering firm** in Bangladesh, providing expert services in the **design, construction, and retrofitting** of RCC and steel structures. With a strong focus on **fire safety, electrical safety, and sustainable construction**, the company is dedicated to meeting the growing demands of the **industrial, commercial and residential sector** while delivering **high-quality, safe, and environmentally responsible** solutions.

As an enlisted service provider for regulatory partners such as **RSC, Accord, Alliance**, and for brands including **Primark**, Dimension Nano Engineering has completed over **100 structural designs**, constructed more than **60 RCC and Steel Structures**, and successfully executed **65 RSC and Accord-approved DEA and Retrofitting projects**. The company offers services including **detailed engineering assessments (DEA), turnkey construction, and project management**, supported by **BEPZA membership and EGP licensing**.

Dimension Nano Engineering is committed to building for the future through **green buildings and sustainable construction practices**, aligning with the global transition to **environmentally friendly infrastructure**. Its dedication to **quality, innovation, and sustainability** positions the company as a **trusted partner** for **engineering projects** of all scales.

**100+**

Structural Designs & Consultancy

**60+**

Buildings Constructed

**65+**

RSC & Accord  
Approved with our DEA

**10+**

Project Management & Consultancy

## Standards & Codes

- Bangladesh National Building Code (BNBC)-2006/2020
- American Concrete Institute (ACI)318-14)
- American Society of Civil Engineers (ASCE 7-05)
- Uniform Building Code (UBC-94)
- American Society for Testing Materials (ASTM)
- International Building Code (IBC)
- Federal Emergency Management Agency (FEMA)



WHY DIMENSION





# Story behind

It is with great pleasure that I introduce **Dimension Nano Engineering**, a company born out of a deep **commitment** to contribute to the fast-developing infrastructure of **Bangladesh**. As a rapidly growing nation, Bangladesh requires **innovative, sustainable, and quality-driven solutions**, and we are proud to be part of this transformation.

With over **15 years** of experience in the **engineering sector**, I have seen firsthand the vital role that **efficient and sustainable construction** plays in building a better future for our country. This experience has shaped **Dimension Nano Engineering** into a **leading force** in designing and constructing **RCC and Steel structures**, offering services in **structural design, retrofitting, fire safety, and electrical safety**, among others.



Our **mission** is simple to deliver **high-quality, safe, and energy-efficient** solutions that not only meet but exceed our clients' expectations. With a **vision** of shaping a **sustainable Bangladesh**, we are driven by a focus on **innovation, quality, and environmental responsibility** in every project we undertake.

We take immense pride in our dedicated team of **architects, engineers, and skilled workers**, who use **advanced design software** and follow **international standards** to ensure each structure is not only **durable and functional** but also **attractive and eco-friendly**. Our commitment to **quality, integrity, and sustainability** will guide us as we continue to grow, and we are confident that, with the support of our valued customers and partners, we will contribute to the development of a **better tomorrow** for Bangladesh.


Thank you for your interest in **Dimension Nano Engineering**. We look forward to building a **sustainable future** together.

A handwritten signature in black ink, belonging to Engr. M M Haque Rajib.

**Engr. M M Haque Rajib**

Managing Director  
Dimension Nano Engineering





**Construction &  
Retrofitting  
Consultancy**

**Construction &  
Retrofitting**

## **Our Services**

**Detailed  
Engineering  
Assessment**

**Project  
Management &  
Consultancy**



# Structural Design & Consultancy

1



## Kick off Meeting

- Understanding the context of the organization
- Understanding the needs and expectations

## Initial Site Visit

- Visualize and understanding overall site condition
- Initial land demarcation
- Visualizing client's vision of the project



2

3



## Design offer

- Submission of design offer and agreement
- Negotiation & acceptance design offer

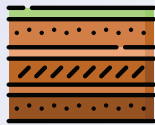
## Surveying & Mapping

- **Topographic Surveys:** Mapping land features for precise planning.
- **Land Demarcation:** Defining clear property boundaries.



4

5



## Soil Investigation

- Soil testing and analysis
- Foundation design recommendations

## Architectural Design

- Conceptual and detailed architectural planning
- 3D modeling and visualization
- Interior layout planning



6

7



## Structural Design & Analysis

- RCC and steel structural drawing
- Fabrication & Erection Drawing
- Earthquake-resistant design

## Documentation & Other Designs

- Bill of Quantities (BOQ)
- Electrical, Fire & Plumbing Drawing
- Working Drawing



8



# Construction & Retrofitting



## Initial Contact & Inquiry

Understanding the client needs. Type of project (RCC, steel structure etc.), location, budget, timeline.



## Preliminary Consultation

Scheduling a site visit or virtual meeting. Discussing project scope, feasibility, and expectations. Sharing portfolio or past projects to build trust.



## Requirement Analysis

Collecting detailed technical and functional requirements. Understand regulatory constraints, land conditions, and client preferences.



## Project Design & Planning

Developing architectural and structural drawings. Getting client approval and make necessary revisions. Applying for permits and approvals.



## Contract Signing

Drafting a contract agreement covering scope of work, payment schedule, project milestones, penalties and warranties and ensuring both parties sign and retain copies.



## Proposal & Quotation

Prepare a technical proposal including: Design concept, Materials and methods, Timeline, Cost estimate, Submit a formal quotation with terms and conditions.



## Execution & Supervision

Mobilizing resources and begin construction. Providing progress reports, site photos, and updates and maintaining regular communication with the client. .



## Quality Control & Safety

Ensuring compliance with standards (BNBC, RSC, etc.). Conducting regular site inspections and safety audits.



## Handover & Final Billing

Completing final touches and site cleanup. Conducting final walkthrough with the client and Submitting final invoice and collect payment.





# Detailed Engineering Assessment (DEA)

## 1. Initial Contact & Inquiry

Understanding the client's requirements, including identifying the specific buyer or regulatory body involved, is crucial for tailoring our approach to meet their expectations effectively.



## 2. As-Built Drawings Preparation

Prepare or verify as-built architectural and structural drawings.

Drawings Include:

- Foundation layout
- Floor-wise layout plans
- Elevations and sections
- Beam and column schedules
- Machine layout and load distribution



## 3. Engineering Tests

- Concrete Core Testing
- Rebar Scanning
- Steel Testing
- Sub-soil Investigation



## 4. Loading Assessment

Evaluating dead loads (self-weight of the structure, equipment, finishes,) and live loads (usage-based). Creating floor wise load plan.



## 5. Structural Analysis

- Developing a **structural model** using software like **ETABS**, **STAAD.Pro**, or **SAFE**.
- Following **BNBC 2006/2020** and other relevant codes.



## 6. DEA Report Compilation

- Executive summary
- Project background and scope
- Codes and standards used
- Field observations
- Lab Test results
- Structural analysis findings
- Recommendations (e.g., load restrictions, retrofitting needs)



## 7. Retrofitting Design

- If deficiencies are found, design appropriate retrofitting schemes.
- Include detailed drawings, assumptions, and safety measures.  
(if needed)



## 8. Final Approval

Submit the DEA report and Get approval from the RSC, NIRAPON, PRIMARK, INDITEX or buyer.

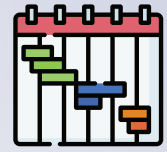




# Project Management Consultancy (PMC)

## Project Planning & Coordination

- Develop detailed project schedules and milestones.
- Coordinate between client, contractors, consultants, and vendors.



## Construction Supervision

- Monitor day-to-day site activities.
- Ensure work is progressing as per design, schedule, and safety standards.

## Quality Assurance & Control

- Implement quality control procedures.
- Conduct regular inspections and testing of materials (e.g., concrete, steel, soil).
- Ensure compliance with codes and specifications.



## Material Testing & Certification

- Arrange third-party lab testing for construction materials.
- Verify test results and approve materials for use.

## Progress Monitoring & Reporting

- Track physical and financial progress.
- Submit regular reports to the client (daily, weekly, monthly).
- Highlight delays, risks, and corrective actions.



## Contractor Management

- Ensure contractors follow scope, quality, and safety standards.
- Issue warnings or notices for delays or non-compliance.
- Assist in resolving disputes or technical issues.

## Cost Control & Billing Verification

- Verify contractor bills and quantities.
- Monitor budget utilization and suggest cost-saving measures.



## Handover & Documentation

- Ensure all works are completed as per contract.
- Prepare as-built drawings, test reports, and final documentation.
- Assist in project handover with a detailed report.



# Our Star Clients



SM Sourcing



Bancoff Ltd



Bay Group



Posmi Sweaters Ltd.



Asrotex Group



Tex International BD



Florence Group



Cherry Group



NR Group



Crystal Industrial  
Bangladesh Pvt. Ltd.



HopLun



Dynasty Group



Spider Group



Lantabur Group



Ha-meem Group



Axis Knitwears Ltd.



Lusaka Group



Versatile Group



T.J. Sweaters Ltd



NR Group



# Our Star Clients



Foot Gear  
Accessories Ltd



SAG Fashion Ltd



Iris Group



Naomi Sweaters Ltd



Larsen & Toubro



Peak Apparels Ltd



PowerChina



Rowa Fashions Ltd.



Spectra Sweaters Ltd



Lakhsma Sweaters Ltd



Fullcharm Fashion  
Knitters Ltd



North-West Power  
Generation Co. Ltd



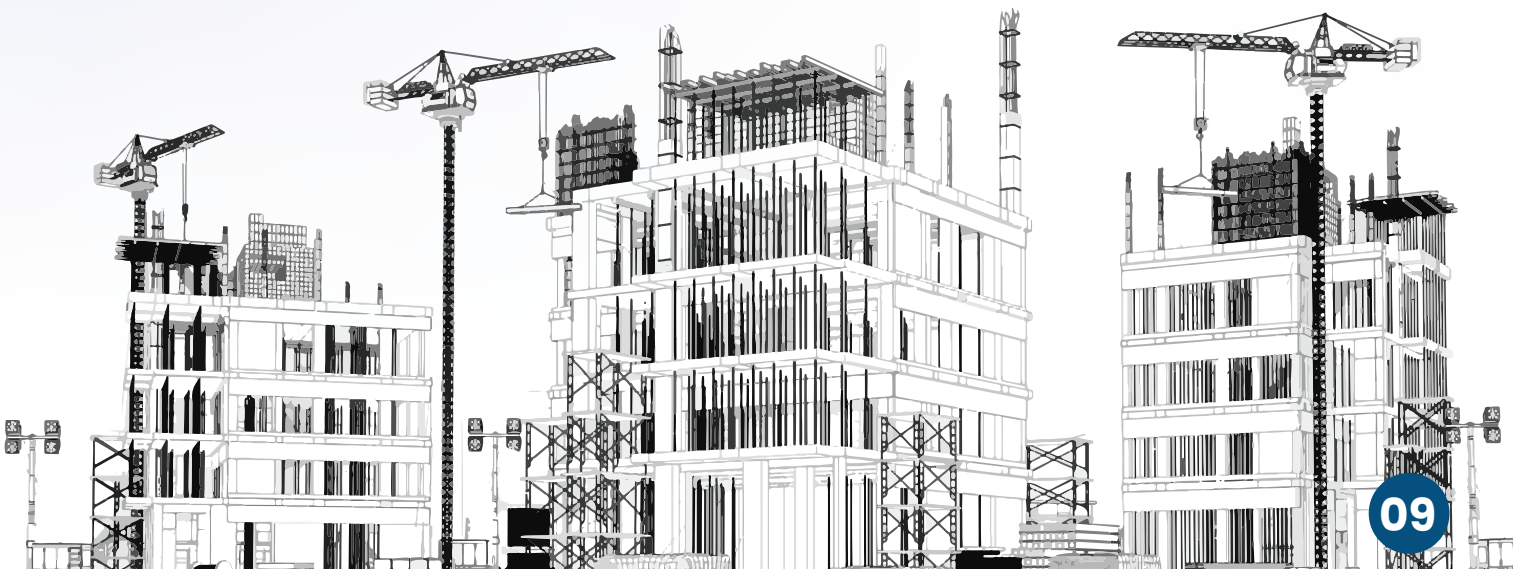
Ministry of Disaster  
Management and Relief



Apparel Today  
Limited

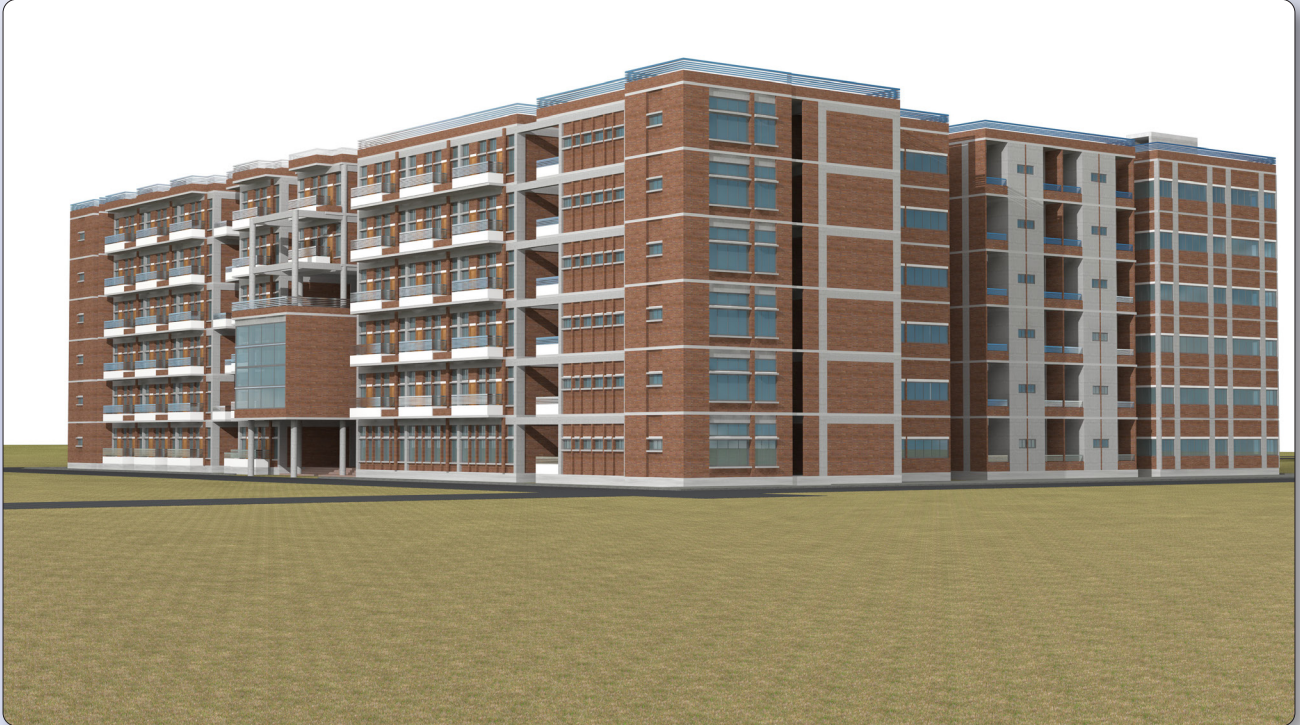


INDEX Agro  
Group



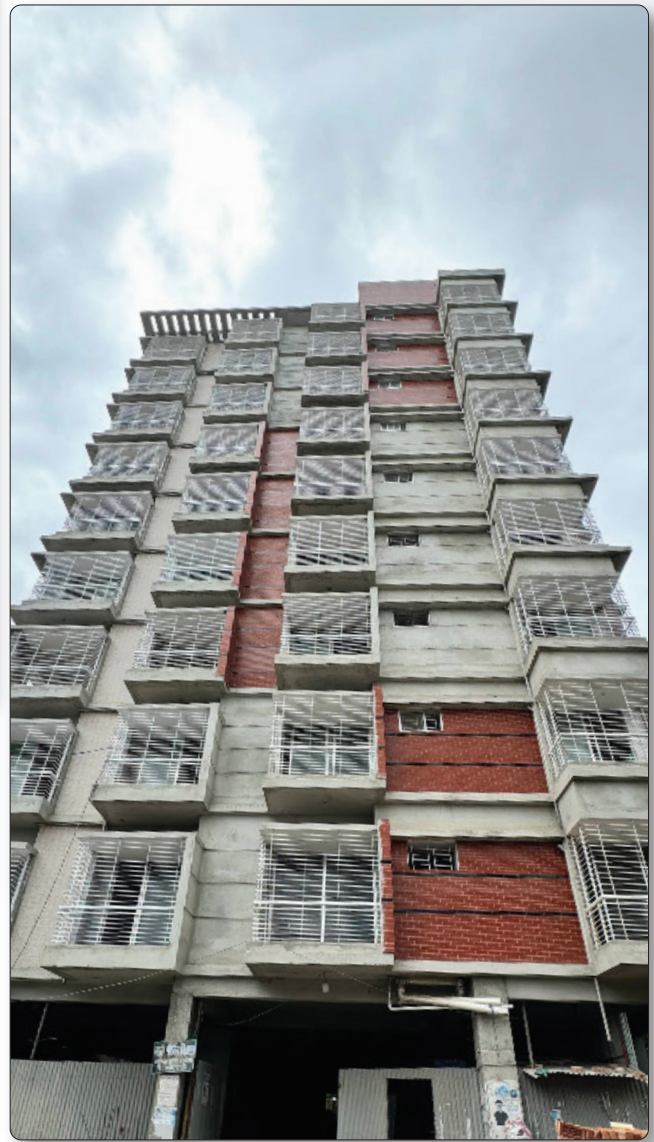


**Project Name:** Dormitory Building  
**Project Location & Year:** Mymensingh (2018)  
**Type of Construction:** Commercial - RCC





**Project Name:** Badda Garden Tower  
**Project Location & Year:** Badda, Dhaka (2022)  
**Type of Construction:** Residential - RCC

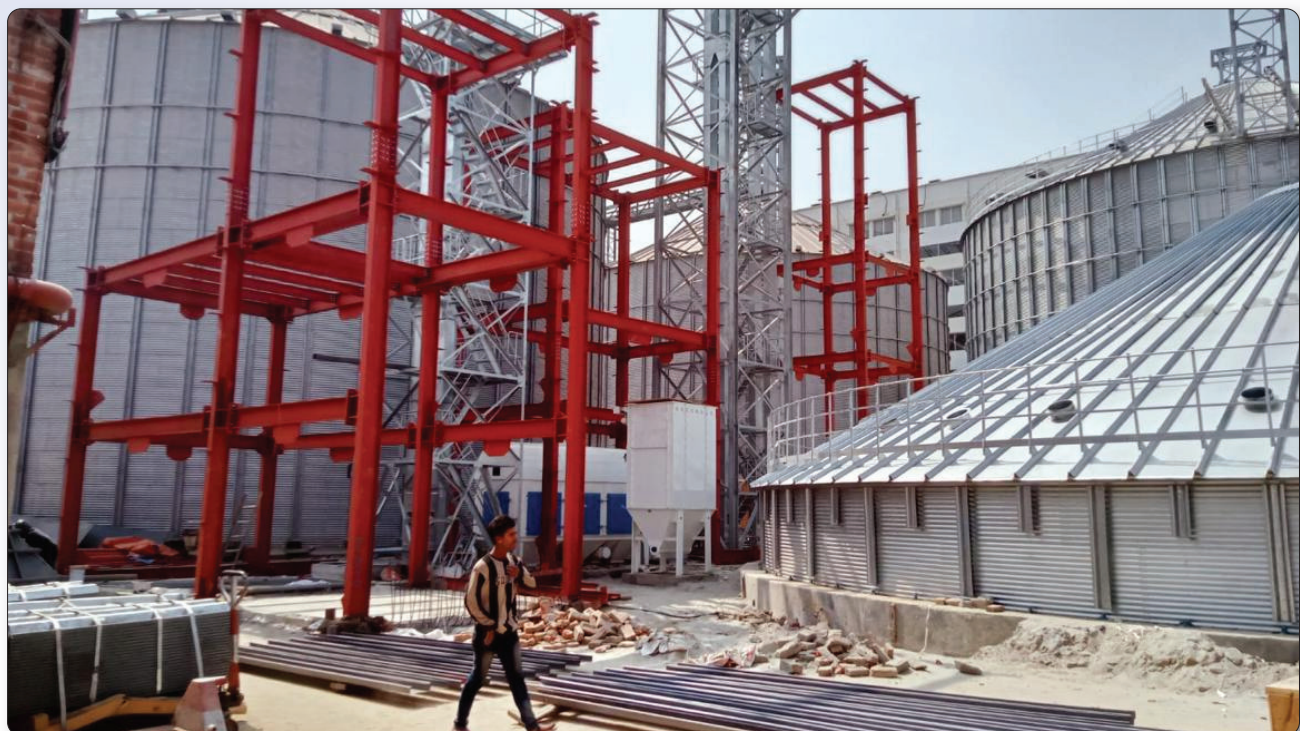




**Project Name:** Silo Towers

**Project Location & Year:** Index Group, Mawna (2022)

**Type of Construction:** Industrial - Steel





**Project Name:** Landscaping

**Project Location & Year:** Payra 1320 MW Thermal Power Plant

**Type of Construction:** Government - Landscaping





**Project Name:** Duplex FarmHouse

**Project Location & Year:** Amin Mohammad Housing (2019)

**Type of Construction:** Residential - RCC





**Project Name:** Food Gear Accessories Ltd  
**Project Location & Year:** Board bazar, Gazipur  
**Type of Construction:** Industrial - Steel





**Project Name:** SM Sourcing

**Project Location & Year:** Baimail, Konabari, Gazipur

**Type of Construction:** Industrial - RCC & Steel







Never Like the Rest

**DIMENSION**  
**Nano Engineering**

✉ [info@dimensionel.com](mailto:info@dimensionel.com)

☎ +880 1780 100 100

🌐 [www.dimensionel.com](http://www.dimensionel.com)

**HQ:** ATASHI, Suite 202, House 39,  
Road 6, Sector 4, Uttara, Dhaka 1230

**Factory:** Joydebpur, Near GMP HQ  
Gazipur, Bangladesh

